

BENACEL®

Oxidized Regenerated Cellulose

"I was introduced to Benacel® at a Hands On Extraction course with Dr. Tommy Murph and Dr. Gayle Fletcher. I was amazed at the ease to place Benacel® has removed almost all dry sockets that I was encountering and the healing time has been reduced."
- Dr. Patrick Liedl, Turtle Lake, WI - 2,700+ Benacel® plugs/sheets

BenaCel® Dental Dressing is made of biocompatible oxidized cellulose and contains no chemical additives. When placed in the extraction site, BenaCel® Dental Dressing forms a gelatinous scaffold and adheres to the wound site. This facilitates the development of a stable blood clot and prevents dry socket formation. BenaCel® Dental Dressing is absorbable and safe if swallowed.

BenaCel® Dental Dressing may also be used as a wound dressing for the temporary management of bleeding surgical wounds, such as operative, postoperative, donor sites, and traumatic injuries. Made of plant based material, BenaCel® Dental Dressing is non-allergenic and non-immunogenic.



Recommended For

Bleeding Management

Dry Socket Reduction

Sinus Perforation Repairs

Available Sizes

5 x 7 mm plugs

Anterior conical extraction sites

6 x 8 mm plugs

Posterior conical extraction sites and sinus perforations

7 x 9 mm plugs

15 x 15 mm sheets

Mandibular molars and buccal roots of maxillary molars

50 x 50 mm sheets

Surgical wounds, such as operative, postoperative, donor sites, and traumatic injuries

BENACEL®

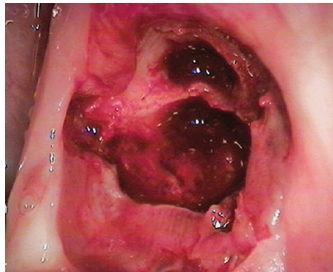
Oxidized Regenerated Cellulose

Post-Extraction Wound Management

Fresh 3rd-molar extraction site



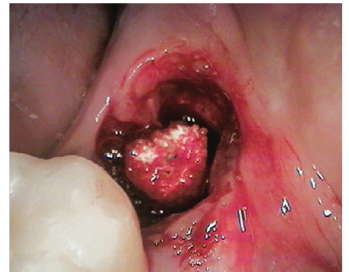
Remove granulation tissue



Obtain BenaCel® from blister pack



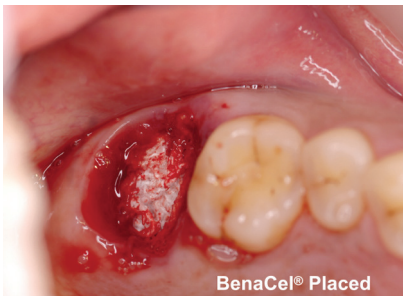
Insert BenaCel® into wound site



With BenaCel® dental dressing, management of post-extraction wound healing is as easy as 1, 2, and 3. (1) After extraction, remove granulation tissue. (2) Pack 1 or 2 pieces of BenaCel® dental dressing into the wound. (3) Have the patient bite down on a sterile gauze pack until bleeding stops. The gelatinous material helps to form a stable blood clot, preventing dry socket formation. BenaCel® dental dressing dissolves within days and is safe if swallowed.

Clinically Proven Results

Maxilla 2nd Molar



Mandibular 3rd Molar



Maxilla Central Incisors

